



SPRINGFIELD  
SCHOOL

Prospectus







## Welcome to Springfield School

Springfield is a non-selective school for 11-16 year olds in Portsmouth. Situated on a pleasant, open site to the north of the city, the school serves the catchment area of Cosham, Farlington and Drayton.

The school is renowned for its academic success, extensive extra-curricular provision and caring pastoral support.

Whether you are a family considering Springfield as the secondary school for your child or a professional looking to work with us, we hope that this prospectus will provide you with a helpful overview of our school and its community.

THE



DEPENDS ON WHAT  
YOU DO TODAY



- 4 Aims & Ethos
- 8 Curriculum & Learning
- 12 Care, Support & Guidance
- 14 Teaching & Professional Development
- 16 Location
- 18 Applying to Springfield





I am delighted to welcome you to Springfield.

There is a proverb, African in origin I believe, that suggests that the best 'gifts' we can pass on to our children are 'roots and wings'; this reflects very much the philosophy of our school.

We are a strong, aspirational community founded on positive and

**'I feel very privileged to be leading Springfield.'**

respectful relationships; every individual is known and supported in their learning and personal development. We aim to

inspire our students with a love of learning, a desire to innovate and a sense of discovery and optimism for their twenty first century world.

We offer a rich curriculum and our commitment to promoting student leadership and co-construction means that students are actively engaged in developing the school and shaping their own learning.

Our teachers recognise individual learning styles, as well as the need to encourage independent and collaborative learning.

I feel very privileged to be leading Springfield. Our students are the strongest advocates of our success and I encourage you to visit us and talk directly to them. They will tell you about their talented and committed staff, the extensive facilities that they enjoy and the challenge and fun that they experience every day at school.

For any young person who is passionate about learning and determined to achieve in the context of an inclusive community with very high expectations, Springfield represents a true opportunity.

I look forward to meeting you.

**Ms S F Spivey**  
Headteacher

**Ms S F Spivey**  
Headteacher

**We aim to :**

**1. Create aspirational students for whom success and the pursuit of excellence is an expectation.**

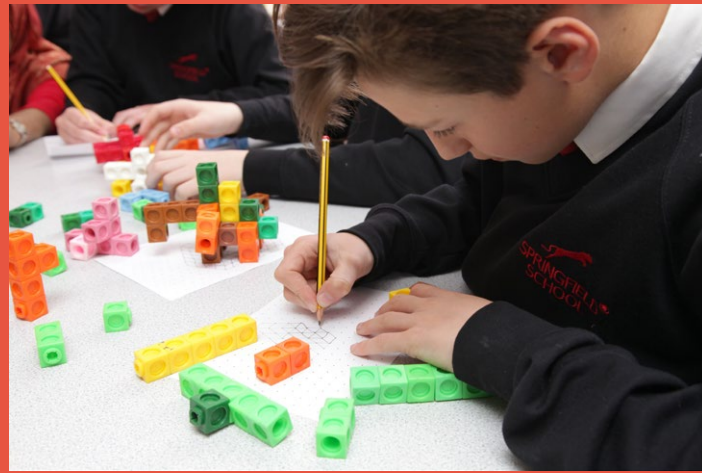
**2. Empower our students to maximise their potential and develop the skills they need to live independent and happy lives.**

**3. Provide a relevant academic curriculum which supports students to become responsible citizens, well equipped for the technological and global society in which they will live.**

**4. Develop system leadership at all levels and ensure that it drives creativity and improvement across the school.**

**5. Increase the occurrence of 'outstanding' teaching across the school.**





‘Springfield is not just a school, it’s a community. We work hard to maximise the potential of every child to establish sound foundations upon which to build their future.’

**D. Good**  
Chair of Governors

‘Springfield is an exceptional school full of life-changing opportunities and rewarding experiences.’

**Max**  
Year 10

‘Starting at Springfield has been great! I have made lots of new friends and the teachers show lots of enthusiasm towards their subjects.’

**Elizabeth**  
Year 7

‘Springfield is a diverse, active school, which makes it a wonderful establishment in which to work. Both children and staff have been extremely welcoming and supportive.’

**C. Fellows**  
Newly Qualified Teacher

‘My daughters are progressing very well and have a great relationship with the teachers and pupils. Springfield is very supportive and ensures that the children are happy, encouraged and confident.’

**V. Ripiner**  
Parent

‘At Springfield there are so many chances to experience new opportunities, whether it be an after school club, an educational trip or even just in a lesson!’

**Isobel**  
Year 7





‘The Quality of teaching is very well led and managed. Staff morale is high and there is a sense of pride in the quality of learning in the school from them and from pupils.’

Ofsted

## Subjects

Springfield provides a rich and relevant curriculum which contributes to effective learning and achievement.

The school has good links with local and national industries and delivers an enhanced provision, including ‘focus days’, in STEM (Science, Technology, Engineering and Mathematics) subjects. The majority of students go on to study ten subjects at GCSE level.

Students also follow a personal development programme which incorporates Careers Education, Work Experience, Citizenship and PSHE (Personal, Social, Health and Economic Education). The school is an active member of NACE (National Association for Able Children in Education).

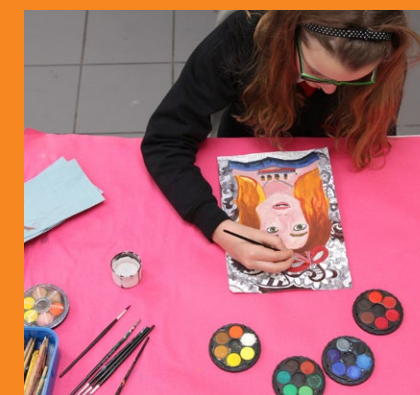
Subjects offered include:

- Art
- Design and Technology (Product Design at GCSE)
- Dance
- Drama
- English Language
- English Literature
- Food and Nutrition
- Geography
- History
- ICT/Computing
- Mathematics
- Media Studies (GCSE only)
- Modern Foreign Languages
- Music
- Photography (GCSE only)
- Physical Education
- Religious Studies
- Science (Double and Triple options at GCSE)
- Textiles (GCSE only)

## Facilities

The school has a spacious campus based around three central buildings. All subject areas are exceptionally well furnished with specialist equipment; the whole school is networked and students have excellent access to computers. Additional facilities include:

- Computing suites
- Drama studios
- Environmental area/ garden
- Learning centre
- Library
- Music practice rooms
- Outdoor gym
- Specialist Science laboratories
- Specialist Technology rooms
- Sports field
- Staff professional development centre
- Tennis courts







## Student Leadership

We consider the development of personal confidence and leadership skills to be of paramount importance. Students are encouraged to participate in a wide range of activities that contribute to developments in the school and beyond. A number of our students are members of the Council of Portsmouth Students; they campaign on behalf of young people across the city.

Mixed age working and support is a strong feature of the school, with older students supporting younger students with their transition and learning. We have an established and active student council, a 'tutor group assistant' programme, peer mentors and a prefect system for older students. Our senior prefects have led INSET training for staff and joined the senior leadership team in planning key developments. Our students know that their views matter and that their contribution to school life is valued.



## SEND

The Special Educational Needs/Disabilities Department, in partnership with external agencies, supports students with identified needs to ensure that they participate fully in school life and have access to an appropriate curriculum.

Learning support and teaching assistants work alongside students in class. Withdrawal sessions are offered in social skills development, phonics, reading comprehension and numeracy; homework support is also available during lunchtimes and after school. Close liaison with families ensures that parents are fully informed of their child's progress.



## Enrichment

We offer an extensive range of extra-curricular activities and school trips, including a number of residential trips abroad, in which we encourage all students to participate.

Fund-raising, clubs and competitions are run by all curriculum areas and it would be impossible to list them all; they include sport, creative arts, STEM, Young Journalists, Trailblazers and the Duke of Edinburgh Award.



**'All pupils are encouraged to take part in a wide range of activities as an expression of its inclusive approach.'**

**Ofsted**





Springfield prides itself on the quality of its pastoral care; it is essential to us that students feel welcome and supported throughout their time at school.

The school works closely with local primary schools. A comprehensive transition programme, which begins during Year 6, ensures that students settle into secondary school as quickly as possible.

We have a Nurse, Attendance Officer and counselling provision on site, and the school links with other agencies as required to support students' individual welfare needs.

**'The school places a high premium on teachers knowing their pupils well and responding to individual needs rapidly. There is a strong culture of care for pupils and for their safeguarding in the school.'**

**Ofsted**

## Heads of Achievement

Each year group has a Head of Achievement, supported by a Pastoral Manager, who is responsible for monitoring the achievement, welfare and progress of students in the year group. The Head of Achievement also liaises with and advises their Form Tutor Team. Heads of Achievement and Pastoral Managers are available to consult with parents either by telephone or by appointment.

## Tutors

On admission, every student is placed in a tutor group.

The Form Tutor sees the tutor group twice a day and is the first link between parents and the school.

Parents are encouraged to contact the Form Tutor if they wish to discuss any issues affecting the progress, well-being or behaviour of their child.



## Careers

IAG (information, advice and guidance) is provided through the tutorial programme, discrete lessons and 'focus days'.

Students are supported to make informed choices through the GCSE options process; clear progression pathways are available for them.

Enrichment through STEM activities, work experience and assemblies widen students' horizons so that they are very well equipped for the next stage of their education.

## Post-16

The majority of our students go on to higher education at our local sixth form colleges: Havant, Highbury, Portsmouth and South Downs; some attend colleges in Fareham and Chichester.

A small number of students choose training or apprenticeship opportunities.

Many Springfield students go on to higher level study at university, including Oxbridge and other Russell Group universities.





‘The school is improving because of the very good leadership you [Headteacher] and your senior team provide.’

Ofsted



Teaching Staff



Professional Development

Our policy is to recruit, develop and retain high quality teaching staff who are passionate about their subject(s) and securing the very best outcomes for young people. We recognise that teaching is a challenging career and look for professionals who have very high standards and who are willing to go ‘above and beyond’ for the students in their charge.

Springfield is part of the Portsmouth Teaching School Alliance and has links with the Initial Teacher Training Departments at the University of Chichester and the University of Portsmouth. Subject networks exist across the City and staff participate in partnership working with local primary schools.

Teaching vacancies are listed on the school’s website and advertised in the Times Educational Supplement.

Springfield is committed to providing high quality professional development for all staff. The school is an active member of the Challenge Partners network and has a designated professional development centre for staff use.

Much of our professional development is designed and delivered by staff ‘in house’; our INSET days focus on sharing expertise and developing pedagogical and leadership practice. In addition, we encourage staff to participate in local and national programmes, including the National College for Teaching and Leadership qualification suite and the Outstanding Teacher Programme. Local universities offer Masters Degrees in Education.

Similarly, we combine in-house and external training and development for support staff appropriate to their role and requirements.

‘There is a wide range of successful strategies to improve the quality of teaching. Pupils value their learning and play a full part in lessons.’

Ofsted





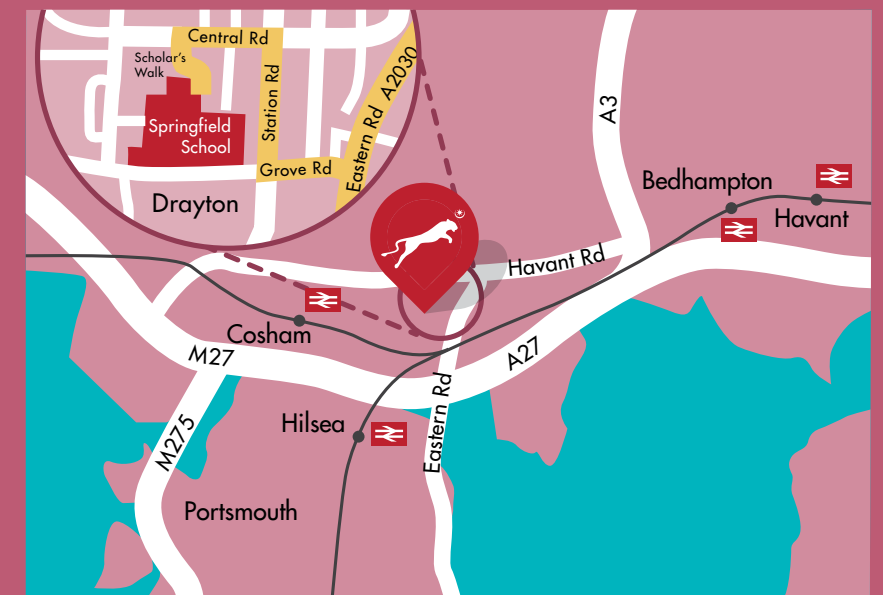
'Springfield provides a very happy, inspiring environment for all pupils to achieve their full potential.'

**T. Randell**  
Parent

## Springfield School

The school is easily accessed via the A27 (from the east), M27 (from the west) and A3 (from the north). The nearest mainline railway station to the school is Cosham.

Springfield School,  
Central Road,  
Drayton, Portsmouth,  
PO6 1QY



## Portsmouth

Surrounded by the attractive Hampshire countryside, Portsmouth is a dynamic and lively waterfront city.

The city has a proud maritime heritage, world-class visitor attractions, museums and galleries, unique shopping destinations, great places to eat and miles of beautiful seafront. It is a vibrant place in which to live and work.





## Applying to Springfield

### Open Evening

Springfield hosts an open evening for prospective students and their families during late September or October every year. The date of the open evening is listed on the school's website once it has been agreed with Portsmouth City Council. In addition, the school runs three open mornings during which parents can see the school 'in action'.

Admission to the school is managed by the Admissions Service of Portsmouth City Council, which is required to take part in a cross-border co-ordinated scheme for main round admissions. This allows parents to complete one application form from their home local authority, regardless of the school and the area in which they wish to apply for a place. This is known as a 'Common Application Form'.

Please contact the Admissions Service directly for information regarding applying for a place at Springfield.

Admissions Service  
Portsmouth City Council  
Civic Offices  
Guildhall Square  
Portsmouth  
PO1 2EA

Tel: 023 9268 8008

Email: [admissions@portsmouthcc.gov.uk](mailto:admissions@portsmouthcc.gov.uk)

Website: [www.portsmouth.gov.uk/schooladmissions](http://www.portsmouth.gov.uk/schooladmissions)

### Allocation of places

Portsmouth operates an 'Equal Preference' admissions scheme in line with government requirements.

If the school is oversubscribed, applications will be considered first according to the following priorities in the order set out below:

1. Children who are or have been looked after by a local authority.
2. Children or families who have a significant medical, physical, psychological or social need.
3. Children living within the school's designated catchment area.

If the school cannot admit all applications from the catchment area, priorities (as defined in the Portsmouth City Council Admissions Policy) will be used.







## SPRINGFIELD SCHOOL

Central Road, Drayton, Portsmouth, PO6 1QY

Tel (023) 9237 9119

Fax (023) 9238 8784

Email [contact@springfield.uk.net](mailto:contact@springfield.uk.net)

Twitter @SpfldUK

Headteacher

Ms S F Spivey BSc, MA

[www.springfield.uk.net](http://www.springfield.uk.net)

The De Curci Trust is a charitable company limited by guarantee registered in England and Wales with company number 10646541. Its registered office address is Springfield School, Central Road, Portsmouth, PO6 1QY, United Kingdom.

Springfield School is a business name used by The De Curci Trust.

Trustees: C Batstone, A Bohea, S Brueton, A Cufley, D Good, L Sinnott, S Spivey, T Webber, L Wilby.